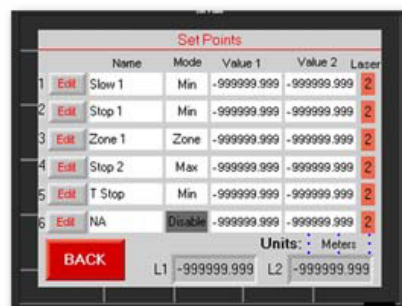
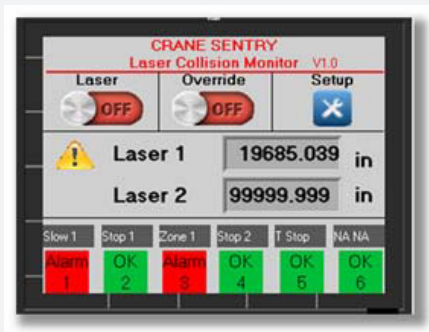


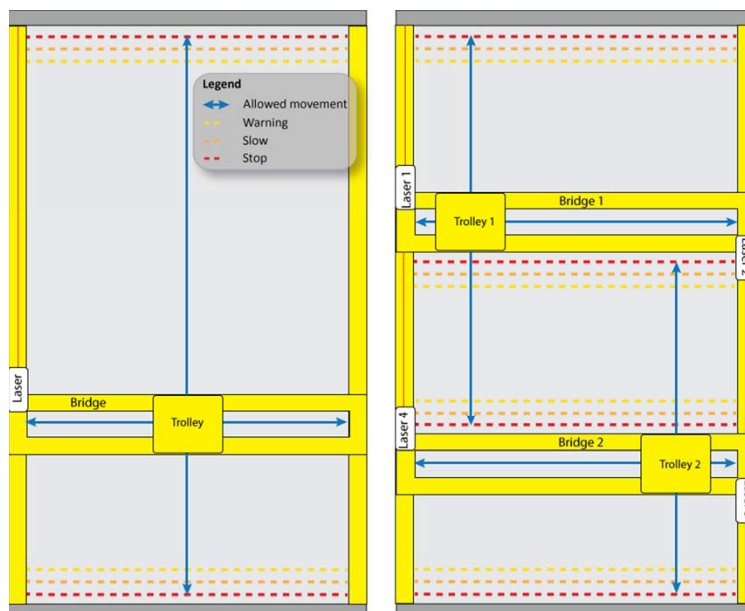
## What Does Crane Sentry Jr Do?

- ⊕ Crane to Crane/crane to wall
- ⊕ Trolley End Stops
- ⊕ Mid-range with up to 164 ft (50m)
- ⊕ Configurable Relay outputs
- ⊕ Connects up to 2 lasers
- ⊕ No reflector required



### DISTANCE MINIMUM/ MAXIMUM

Using one laser aiming at a fixed target, Crane Sentry Jr controls forward and reverse motion. When crane approaches end limits, the slow speed and end stop alarms are triggered.



### CRANE TO WALL OR CRANE TO CRANE

One laser aims at a fixed target, the other laser aims at the second crane. Similar to the first example, when crane approaches a set point limit, the slow speed and stop alarms are triggered.

## SOLUTION

# What makes Crane Sentry® Jr better?

### PERFORMANCE

- ⊕ Up to 0.20 in (5 mm) accuracy
- ⊕ Indoor/outdoor use
- ⊕ Up to 164 ft (50 m) range
- ⊕ Operates without a reflector

### CONFIGURATION

- ⊕ Plug & play set up
- ⊕ Simple User Screen
- ⊕ Teach or enter set points
- ⊕ Configurable relay outputs

### FEATURES

- ⊕ Supports 2 lasers
- ⊕ Class 2 visible laser
- ⊕ Modular, versatile system
- ⊕ Crane-to-wall/-crane modes

### INSTALL/MAINTENANCE

- ⊕ IP 65 protection
- ⊕ Low maintenance
- ⊕ Quick aim & set installation
- ⊕ Error code troubleshooting

GENERAL	
<b>Power Requirement</b>	110 VAC, 2.5 A
<b>Controller Enclosure</b>	Polycarbonate
<b>Display</b>	TFT LCD display
<b>Laser Sensors:</b>	
<b>Power Rating</b>	Cl 2 Eye safe laser
<b>Range</b>	50 m natural target; no reflector required
<b>Accuracy</b>	5 mm std (1 mm upon request)
<b>Speed</b>	Up to 10 Hz
<b>Target Speed</b>	200 ft/min - consult factory for faster cranes
<b>Environmental Rating</b>	IP65
<b>Operating Temp Range</b>	-10°C to +50°C
<b>Configuration</b>	6 programmable outputs, user configurable as restricted zones
<b>Outputs</b>	(2) Status outputs (8) NO/NC 8A relay contacts (6) User Configurable
<b>Inputs</b>	(1) 110 VAC master override option

## Highlights

- ⊕ Complete modular system includes up to 2 lasers
- ⊕ Quick aim & set installation, versatile application
- ⊕ Intuitive operation, simple troubleshooting
- ⊕ Rugged industrial package, low maintenance
- ⊕ Indoor/outdoor operation
- ⊕ Non-contact, eye-safe laser measurement

