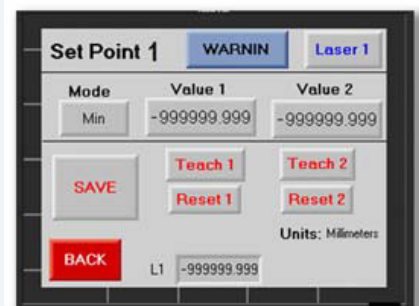
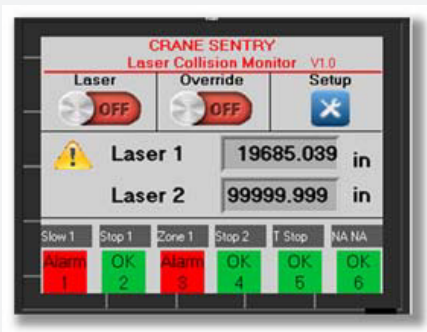


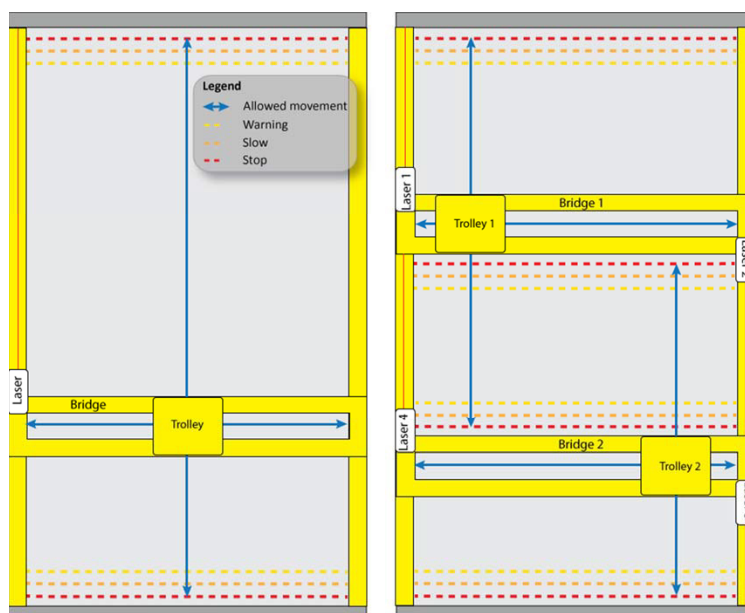
## What Does Crane Sentry Jr Do?

- ⊕ Additional operation modes
  - ⊕ Restricted zone mode
  - ⊕ Skew mode (requires 2 lasers)
- ⊕ Up to 1640 ft (500 m) range
- ⊕ Up to 20 Hz max measuring rate
- ⊕ Optional 8 amp relays
- ⊕ Heating and cooling options
- ⊕ No reflector up to 213 ft (65m)



### DISTANCE MINIMUM/ MAXIMUM

Using one laser aiming at a fixed target, Crane Sentry Jr controls forward and reverse motion. When crane approaches end limits, the slow speed and end stop alarms are triggered.



### CRANE TO WALL OR CRANE TO CRANE

One laser aims at a fixed target, the other laser aims at the second crane. Similar to the first example, when crane approaches a set point limit, the slow speed and stop alarms are triggered.

## SOLUTION

# What makes Crane Sentry® better?

### PERFORMANCE

- ⌚ Up to <1 in accuracy
- ⌚ Indoor/outdoor use
- ⌚ Up to 1640 ft (500 m) range
- ⌚ Operates with/without reflectors

### CONFIGURATION

- ⌚ Plug & play set up
- ⌚ Simple User Screen
- ⌚ Teach or enter set points
- ⌚ Configurable relay outputs

### FEATURES

- ⌚ Supports 2 lasers
- ⌚ Class 2 visible laser
- ⌚ Modular, versatile system
- ⌚ Crane-to-wall/-crane modes

### INSTALL/MAINTENANCE

- ⌚ IP 65 protection
- ⌚ Low maintenance
- ⌚ Quick aim & set installation
- ⌚ Error code troubleshooting



CONTROL SPECIFICATIONS	
<b>Power Requirement</b>	0.45 A @ 110 VAC (1.36 A @ 110 VAC for heated lasers)
<b>Serial Inputs</b>	Two RS232 inputs for two lasers (19200,7,E,1)
<b>Number of Inputs</b>	7 prnp (source) inputs to override alarms
<b>Input Voltage</b>	17-28.8 VDC; 24 VDC nominal
<b>Input Current</b>	8mA @ 24 VDC
<b>Number of Outputs</b>	8
<b>Output Type</b>	SPST-NO (Form A)
<b>Life Expectancy</b>	100k operations at maximum load
<b>Rated Current</b>	3A max per output, 8A max per common (2 commons/unit)
<b>Rated Voltage</b>	250 VAC, 30 VDC
<b>Graphic Display Type</b>	TFT, LCD display (3.5"; 320 x 240 pixels), Resistive, analog
<b>Operating Temp</b>	0°C to 50°C; options for heated and cooled enclosure
<b>Storage Temp</b>	-20-60°C
<b>PLC Memory Battery Backup</b>	7 years typical at 25°C
<b>Expected Life Time</b>	5 to 10 years at 25°C
<b>Ingress Protection</b>	IP65/66/NEMA4x
<b>Enclosure Material</b>	Polycarbonate

## Highlights

- ⌚ Complete modular system includes up to 2 lasers
- ⌚ Quick aim & set installation, versatile application
- ⌚ Intuitive operation, simple troubleshooting
- ⌚ Rugged industrial package, low maintenance
- ⌚ Indoor/outdoor operation
- ⌚ Non-contact, eye-safe laser measurement

