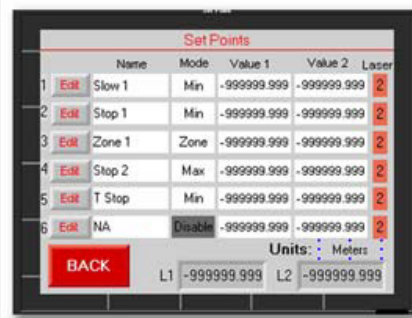
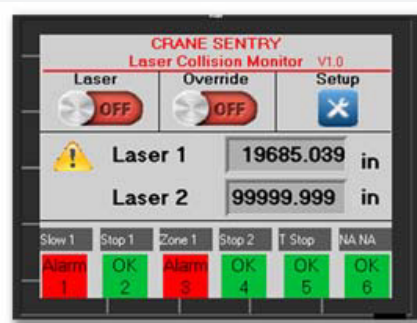


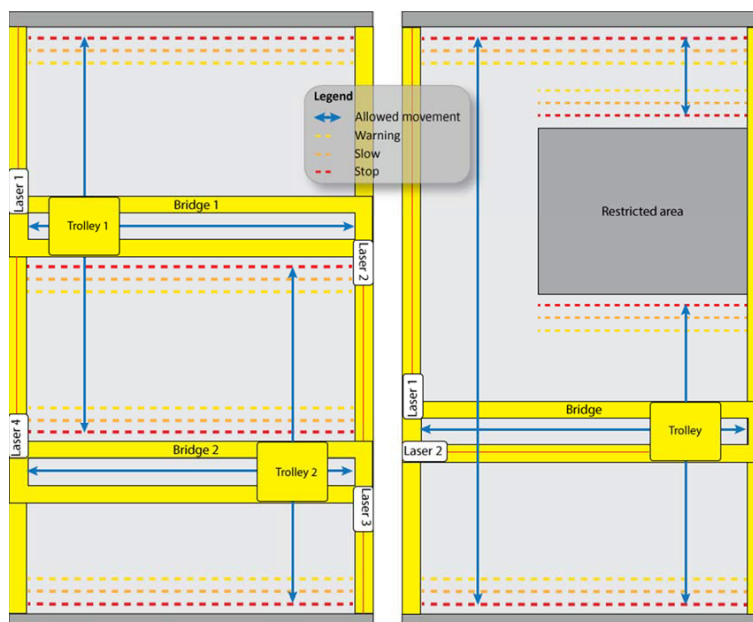
## What Does Crane Sentry Do?

- ⊕ Connects as many as 2 Dimetix laser distance sensors
- ⊕ Program set points or key in values
- ⊕ Available operating modes:
  - Distance alarms (collision monitoring)
  - Zone controls (lock out zone activity)
  - Skew (uses 2 lasers)
- ⊕ Screen shows set points, live readings, and error codes
- ⊕ Laser powered through control box



### TWO LASER END LIMIT & COLLISION DETECTION

One laser aims at a fixed target, the other laser aims at the second crane. Similar to the first example, when crane approaches end limits, the slow speed and end stop alarms are triggered.



### RESTRICTED ZONE-MOTION CONTROL

One laser aims at a fixed target other laser aims at the trolley. Motion of the trolley and bridge are restricted when both the trolley and bridge are in the restricted zone, effectively preventing the crane from entering that area. Three sets of alarms control Bridge Forward, Bridge Reverse, and Trolley Forward. The relay outputs are wired in parallel to ensure movement is restricted only when the bridge AND trolley are in the restricted zone.

## SOLUTION

# What makes Crane Sentry® better?

### PERFORMANCE

- ⌚ Up to <1 in accuracy
- ⌚ Indoor/outdoor use
- ⌚ Up to 1640 ft (500 m) range
- ⌚ Operates with/without reflectors

### CONFIGURATION

- ⌚ Plug & play set up
- ⌚ Simple User Screen
- ⌚ Teach or enter set points
- ⌚ Configurable relay outputs

### FEATURES

- ⌚ Supports 2 lasers
- ⌚ Class 2 visible laser
- ⌚ Modular, versatile system
- ⌚ Crane-to-wall/-crane modes

### INSTALL/MAINTENANCE

- ⌚ IP 65 protection
- ⌚ Low maintenance
- ⌚ Quick aim & set installation
- ⌚ Error code troubleshooting



CONTROL SPECIFICATIONS	
<b>Power Requirement</b>	0.45A @ 110VAC (1.36A @ 110VAC for heated lasers)
<b>Serial Inputs</b>	Two RS232 inputs for two Dimetix Lasers (19200,7,E,1)
<b>Number of Inputs</b>	7 pnp (source) inputs to override alarms
<b>Input Voltage</b>	17-28.8 VDC; 24 VDC nominal
<b>Input Current</b>	8mA @ 24 VDC
<b>Number of Outputs</b>	8 pnp (source) transistor outputs; optional wiring to relay outputs
<b>Output Voltage</b>	24 VDC
<b>Output Load</b>	0.5 A maximum per output. 3A maximum total per common
<b>Relay Output</b>	CO or SPDT with lockable test button, LED and mechanical indicators
<b>Related Current</b>	8A
<b>Related Voltage</b>	250 VAC
<b>Single Phase Motor Rating</b>	0.37 kW
<b>Graphic Display Type</b>	TFT, LCD display (3.5"; 320x240 pixels), Resistive, analog touchscreen
<b>Operating Temp</b>	PLC: 0°C ... 70°C derates at 30°C (65% at 50°C)
<b>Storage Temp</b>	PLC: 20-60°C
<b>PLC Memory Battery Backup</b>	7 years typical at 25°C
<b>Expected Life Time</b>	P/S 5-10 years at room temperature
<b>Ingress Protection</b>	IP65/66/NEMA4x
<b>Enclosure Material</b>	Polycarbonate

## Highlights

- ⌚ Complete modular system includes up to 2 lasers
- ⌚ Quick aim & set installation, versatile application
- ⌚ Intuitive operation, simple troubleshooting
- ⌚ Rugged industrial package, low maintenance
- ⌚ Indoor/outdoor operation
- ⌚ Non-contact, eye-safe laser measurement
- ⌚ High accuracy, long range, competitive cost

