



## DISTANCE MEASURING – contactless and reliable

### EDS-C – the simple and economic solution



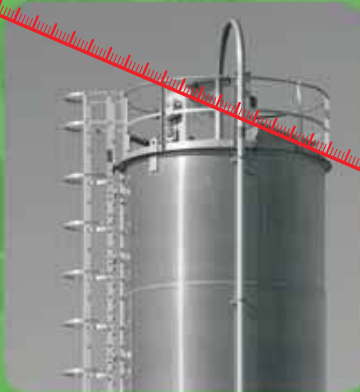
Measuring range: **0 ... 30 m**  
Accuracy: **±3 mm**



Distance monitoring



Height measuring



Level measuring



Diameter gauging

## Simple and cost-effective

The EDS-C Distance-Sensor measures absolute distances up to 30 meters without contact. It measures, maintenance-free, distances on natural surfaces with a precision of 3 mm. The EDS-C Distance-Sensor can determine positions of objects that are difficult to access or may have very high surface temperatures. Just as well it can also measure distances in hostile environments, accurately and with ease.

The application of highly innovative laser technology enables a compact assembly, which permits space-saving installations. The EDS-C Distance-Sensor consists of a rugged, IP65 standard, aluminium case and can be operated at -10 °C to +50 °C ambient temperatures. The excellent price-performance ratio is another added bonus of the EDS-C Distance-Sensor.

Electrical connection of the EDS-C Distance-Sensor is via a standard 5-pin M12 sensor connector. A scalable analog output is available for measurement readings, securing a cost-efficient connection to any control system.



### Specification



#### Measuring range 0.05 up to 30 m

The EDS-C Distance-Sensor can measure distances from 0.05 up to 30 meters.



#### Accuracy 3 mm

The accuracy amounts up to 3 mm – independent of distance, operating temperature or target.



#### Operating temperature

The EDS-C Distance-Sensor can be operated at temperatures of -10 °C to +50 °C.



#### Solid metal case IP65

The solid metal case effectively protects the device from the entrance of dust and water.



#### Supply voltage

The EDS-C Distance-Sensor requires a 24 V DC voltage power supply.

### Interfaces



#### Analog output 0/4–20mA

The analog output provides a simple method of integration into a control system. It can be configured according to your measuring range.



#### Simple connection

The EDS-C Distance-Sensor is connected via a standardized 5-pin M12 sensor connector.



#### Status display

A light-emitting diode (LED) displays the sensor status.



## Highlights



### Multiple usage

Due to outstanding measuring capabilities measurements on natural surfaces, with millimeter-accuracy, on many user-defined surfaces, can be made. Therefore the EDS-C can be used for various applications in the metal-, paper-, textile-, or automotive-industry, to name just a few.

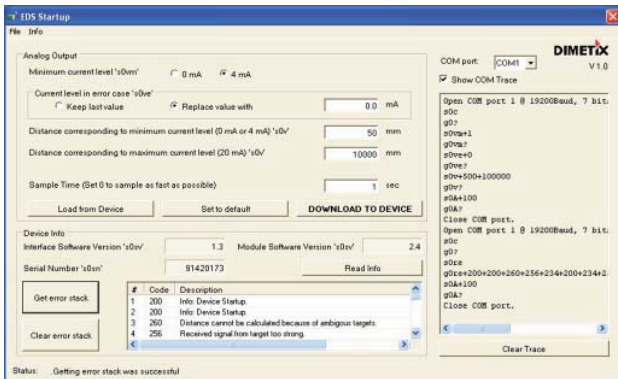
### Simple integration

For the electrical connection of the EDS-C Distance-Sensors a standardized 5-pin M12 sensor connector is provided. The measuring result will be transmitted to a scalable analog output which makes a cost-effective connection to any kind of control system possible.

### Configuration software

For simple configuration of the EDS-C Distance-Sensor, self-explanatory software is provided. This software may be used to change settings on the measuring device in a fast and easy way.

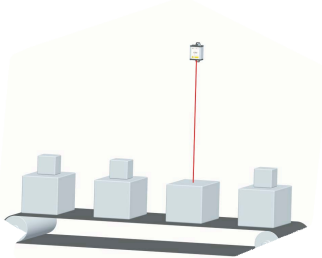
The software is available free of charge as a download from our web site ([www.dimetix.com](http://www.dimetix.com)). It also includes different languages for international use.



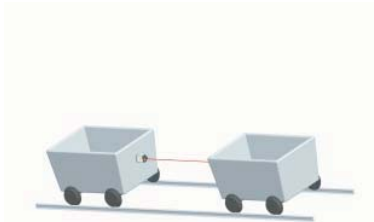
### Accessories

Accessories are available for the EDS-C Distance-Sensor. Further information can be found on our web site [www.dimetix.com](http://www.dimetix.com).

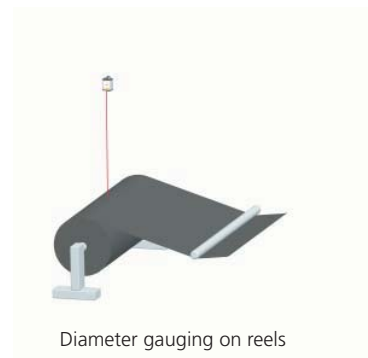
## Application examples



Assembly control / Object recognition



Distance monitoring of cranes, suspended conveyors and conveyors on the ground



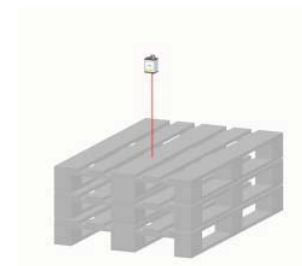
Diameter gauging on reels



Level measuring of silos



Web tension monitoring



Stacker commodities scanning

**DISTANCE MEASURING – contactless and reliable**



## DISTANCE MEASURING – contactless and reliable

### EDS-C – the simple and economic solution

#### Product type

Item No.

#### EDS-C 30

550502

#### Accuracy

(includes all possible errors)

0.3% of the measuring range ( $\pm 3$  mm minimum)

#### Measuring range

0.05 ... 30 m

#### Power Supply

24 V DC

#### Operating temperature

-10 °C ... +50 °C

#### Housing

Metal case IP65

#### Laser

visible, red

#### Dimensions

106 x 62 x 45 mm

#### Weight

280 g

#### Interface

1 analog output 0/4 ... 20 mA, programmable

Further information can be found in our manual.

LASER RADIATION  
DO NOT STARE INTO BEAM  
CLASS 2 LASER PRODUCT



Your local agent:

# DIMETIX USA

Dimetix USA  
PO Box 195  
Lionville, PA 19353  
USA  
Tel: +1 484 212 0636  
Fax: +1 206 338 4281  
info@dimetix-usa.com  
[www.dimetix-usa.com](http://www.dimetix-usa.com)

# DIMETIX

Dimetix AG  
Degersheimerstr. 14  
CH – 9100 Herisau  
Switzerland  
Tel.: +41 71 353 00 00  
Fax: +41 71 353 00 01  
info@dimetix.com  
[www.dimetix.com](http://www.dimetix.com)